

ASSEMBLY DETAILS:

Assemble the three main components of Waste/Overflow.
The Overflow Elbow(5) & Down Pipe(10) are pre-assembled.
Do not tighten Coupling Nuts(7) until all components align.

The plastic Strainer Washer(19) may not be sufficient in all Tub installations, if not then caulking compound (not supplied) can be used instead.

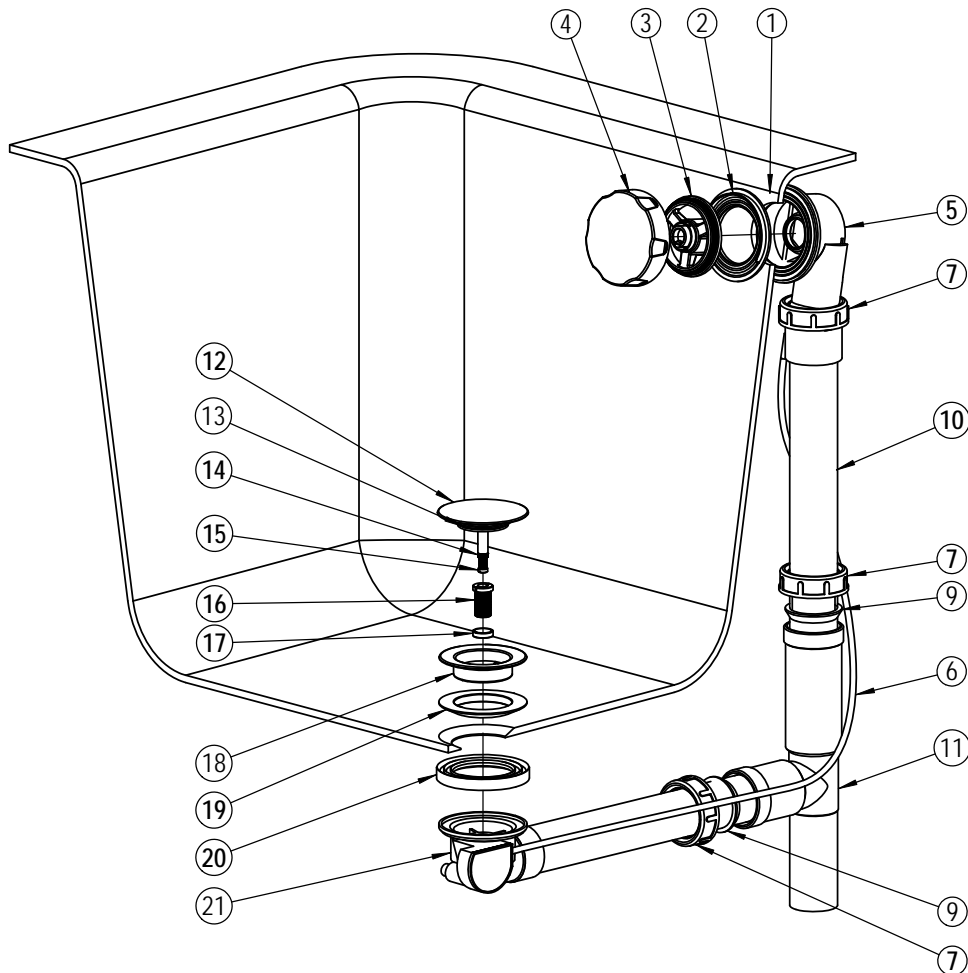
Install Waste Elbow Gasket(20) rib side up.

The Basket Tie Down Nut(16) should be tightened last (hand tight + 1/4 turn).

For thinner Tub installations a spacer Bushing(17) may be required.

The Plug(12) height can be adjusted using the Plug Screw(15) & Lock Nut(14)

ITEM	QTY.	DESCRIPTION
1	1	Overflow Gasket
2	1	Overflow Tie Down Plate
3	1	Overflow Tie Down
4	1	Control Handle
5	1	Overflow Elbow
6	1	Waste & Overflow Cable
7	3	Coupling Nut
8	1	Split Washer
9	3	Rubber Ferrule
10	1	Overflow Down Pipe
11	1	Waste & Overflow Tee
12	1	Waste & Overflow Plug
13	1	Waste & Overflow Plug Gasket
14	1	Waste & Overflow Plug Lock Nut
15	1	Waste & Overflow Plug Screw
16	1	Pop-Up Basket TieDown Nut
17	1	Pop-Up Basket Bushing
18	1	Pop-Up Basket
19	1	Strainer Washer
20	1	Waste Elbow Gasket
21	1	Waste Elbow



12/9/2008